

Table of Contents

1. Download and install:.....	2
2. Start Application Ondolog	2
3. NFC MODE	3
3.1. CONNECTIVITY:.....	3
3.2. SETTING :.....	4
3.3. READ DATA LOGGER:	6
4. USB MODE:.....	8
4.1. SETTING:.....	8
4.2 . READ LOGGER:	8
4.3. REAL TIME:.....	9
5. OPEN:.....	10

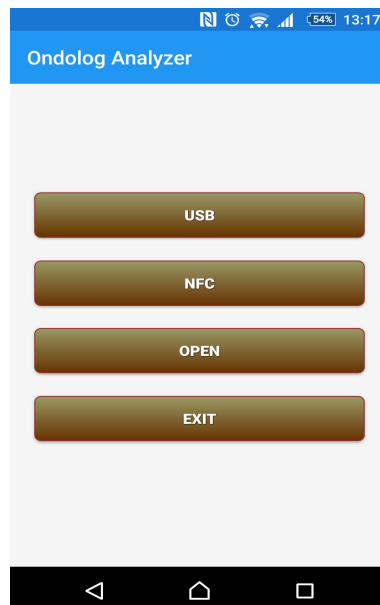
USER GUIDE SOFTWARE ONDOLOG ANALYZER

1. Download and install:



Download and Install app Ondolog analyzer from Google play store

2. Start Application Ondolog



We have:

USB: USB Mode - connect Logger to smartphone via usb connector

NFC: NFC Mode - connect Logger to smartphone via NFC

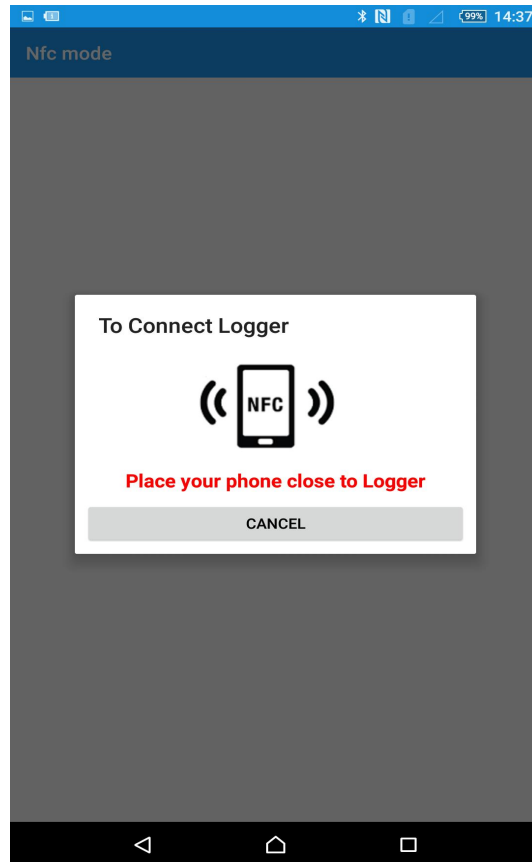
OPEN: Open Ondolog file saved on the smartphone

EXIT: Close App

3. NFC MODE

(Requirement: Smartphone must have NFC and turn it on)

3.1. CONNECTIVITY:

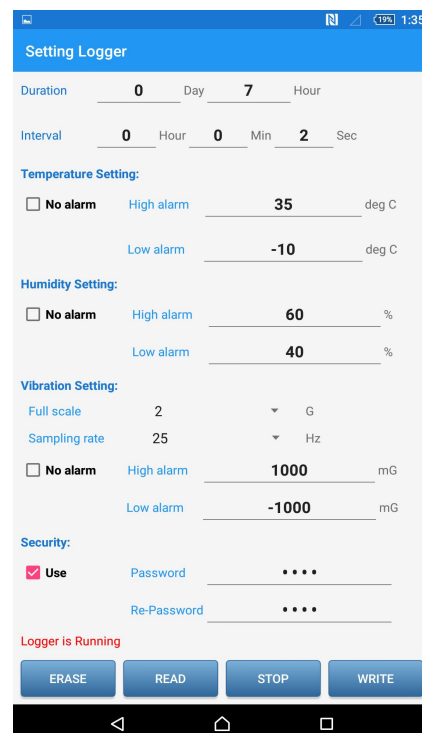
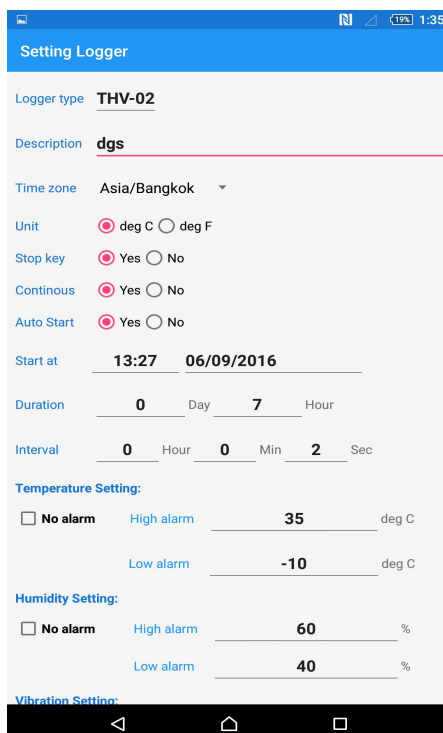
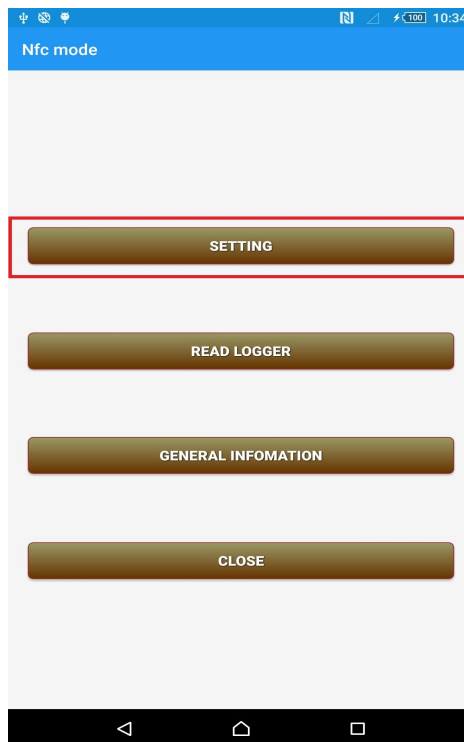


To connect logger to the smartphone for NFC communication , place the smartphone NFC antenna over the logger antenna marked by the below icon.



3.2. SETTING :

After connecting Logger choose Setting from menu



Unit: Choose degree Celsius or degree Fahrenheit

Continuous: Yes or No. If yes memory will be overridden when it is full.

Stop key: Yes or No Enable Stop key button

Auto start: Set time for Logger to start recording data

Duration : Total time for data recording

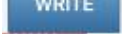
Interval: Sampling time

Temperature setting: Set Temperature alarm

Humidity setting: Set Humidity alarm

Vibration setting: Set Vibration alarm

Security: Set password for Logger

⇒ After entering all settings press button  . Wait until the application displays a success message.

Idem for **READ, STOP and ERASE**

READ: Read current settings

STOP: Stop the Logger if it is running

ERASE: Erase current settings

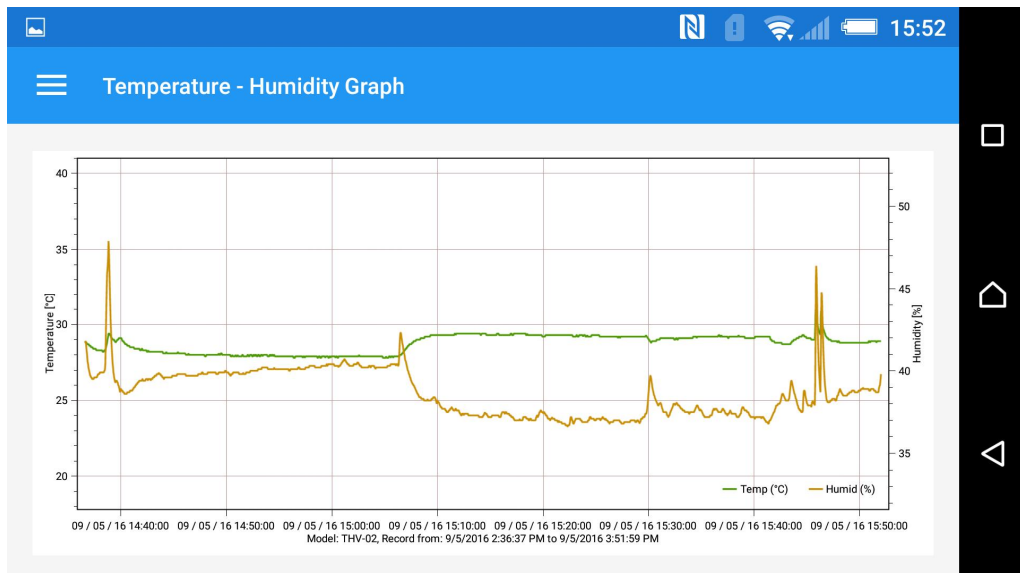
3.3. READ DATA LOGGER:

- Select **READ LOGGER** from menu
- Keep your phone close to Logger until reading is finished.

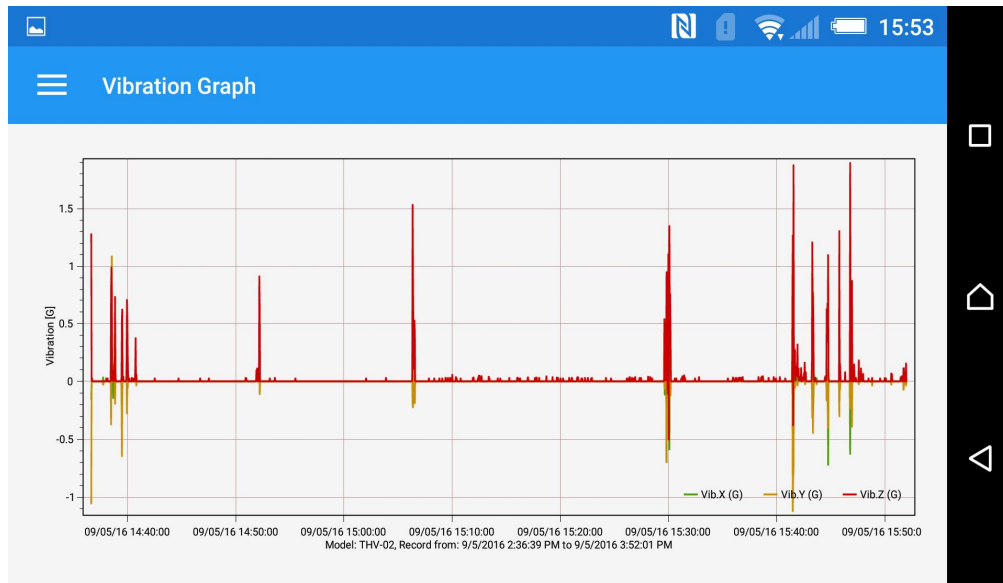


Note:

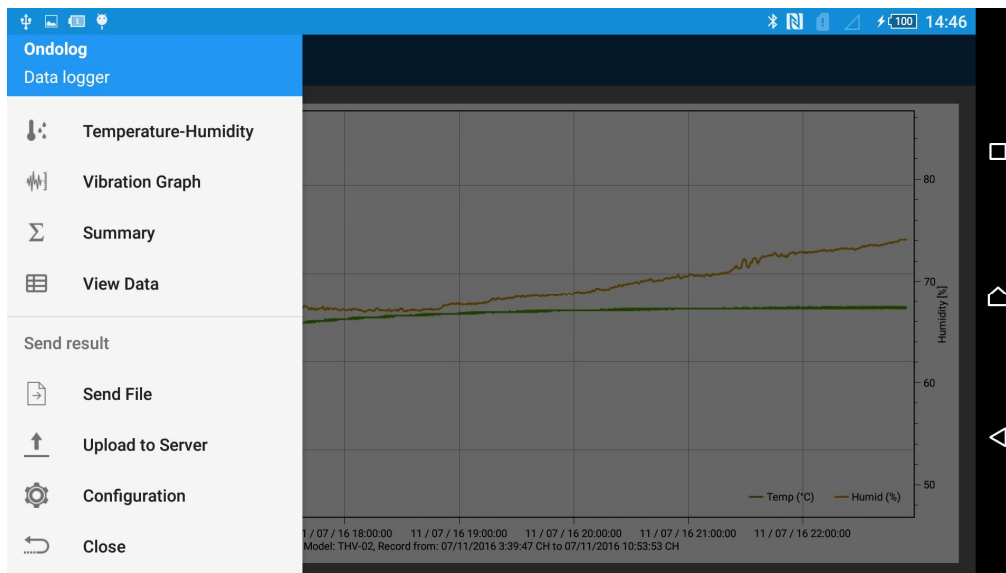
- In NFC mode, data could be read only when Logger is stopped
 - The read file will be saved automatically in the folder ONDOLOG of the smart phone internal storage.
- **Temperature – Humidity Graph:**



- **Vibration graph:**



In Menu we have



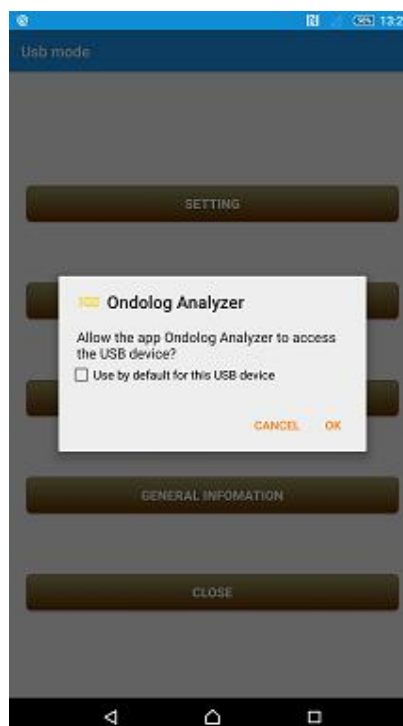
- Summary: General Report
- View Data: view all data on the graph
- Send file: Send file Ondolog data files via Gmail, bluetooth,..
- Configure and upload to server

4. USB MODE:

Logger connected via OTG cable



Allow this App to access the USB Device in USB mode



4.1. SETTING:

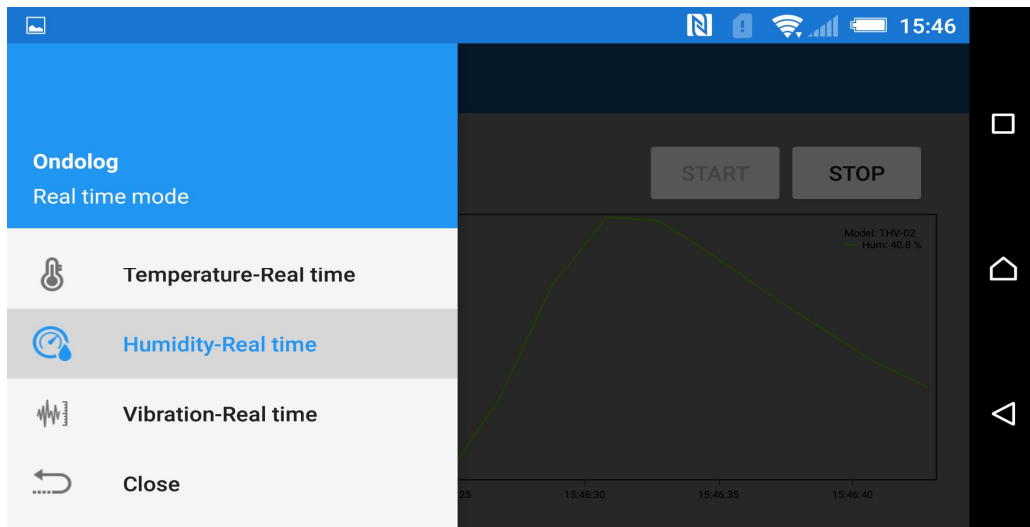
Similar to NFC mode

4.2 . READ LOGGER:

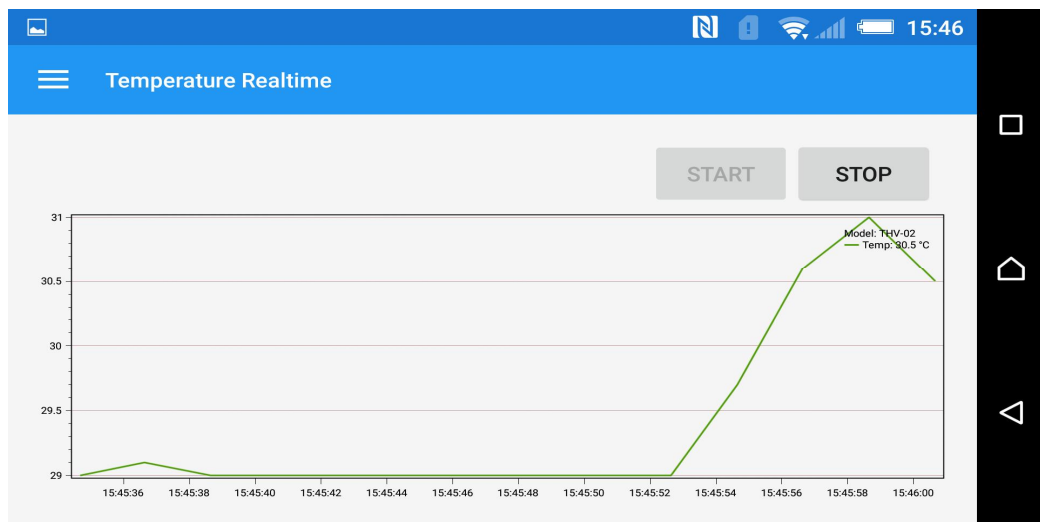
Similar to NFC mode

4.3. REAL TIME:

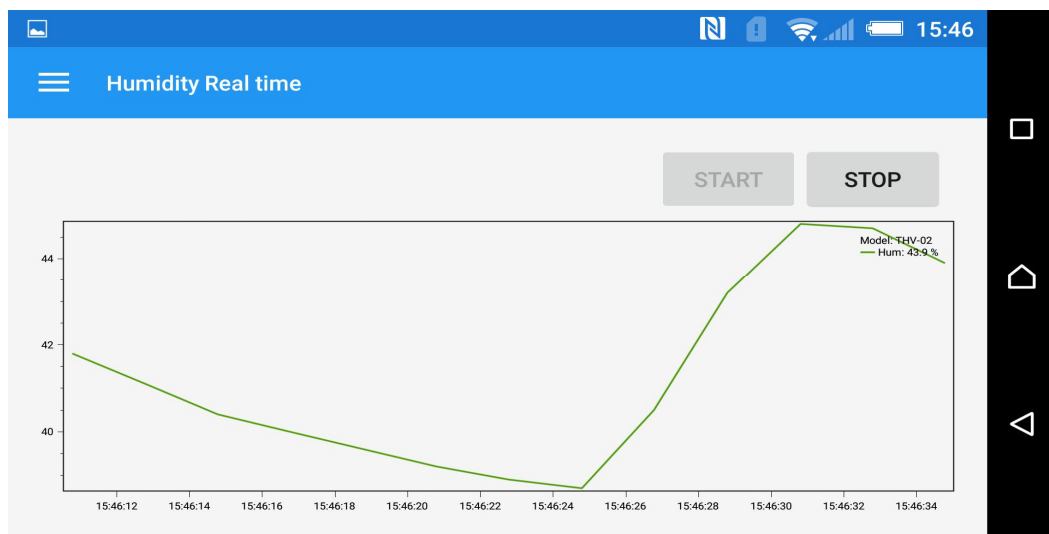
Click Real time in USB mode



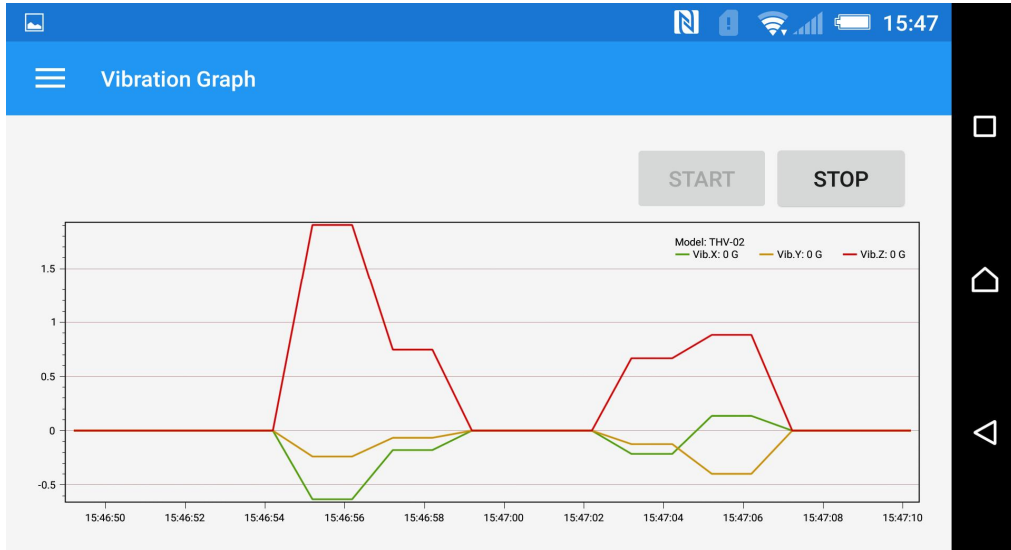
- Temperature Real time:



- Humidity Real time:



- Vibration Real time:



5. OPEN:

Open saved Ondolog file.

